

SUBDIVISION PLAN OF:

- LOT 48 EXCEPT: SOUTH WESTERLY 10 FEET PLAN 21709
- PARCEL "A" (EXPLANATORY PLAN 28685) LOTS 47 AND 48 PLAN 21709
- LOT 49 PLAN 21709
- LOT 50 PLAN 21709
- LOT 72 PLAN 33088

ALL OF SECTION 3 TOWNSHIP 8 NEW WESTMINSTER DISTRICT

City of Langley B.C.G.S. 92G.017



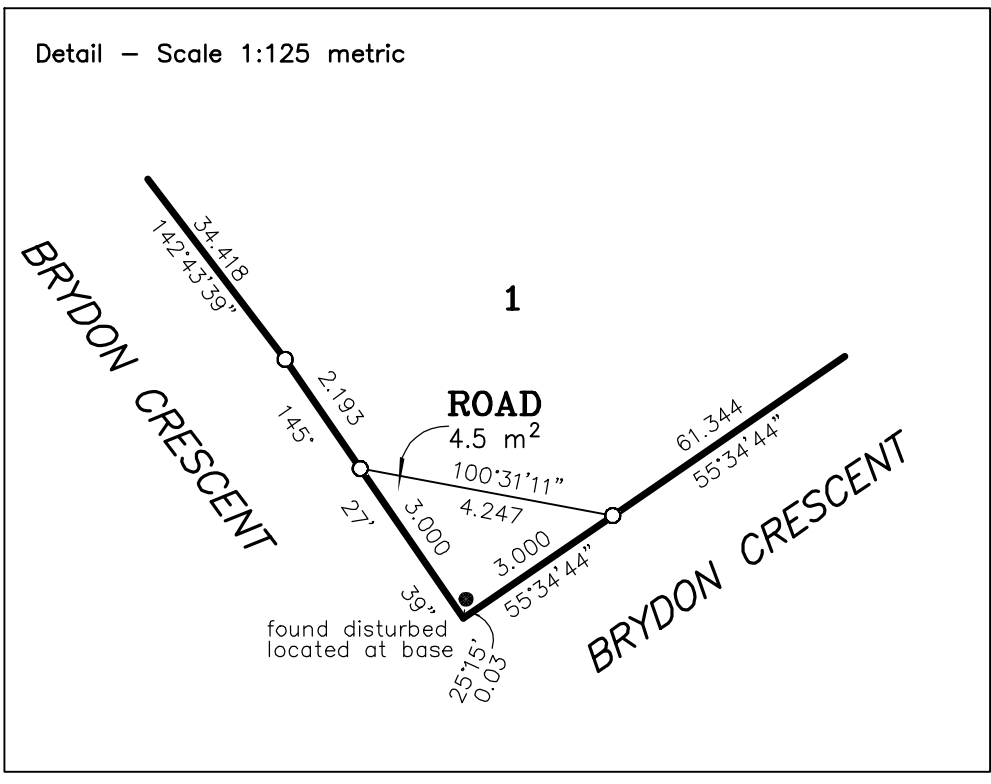
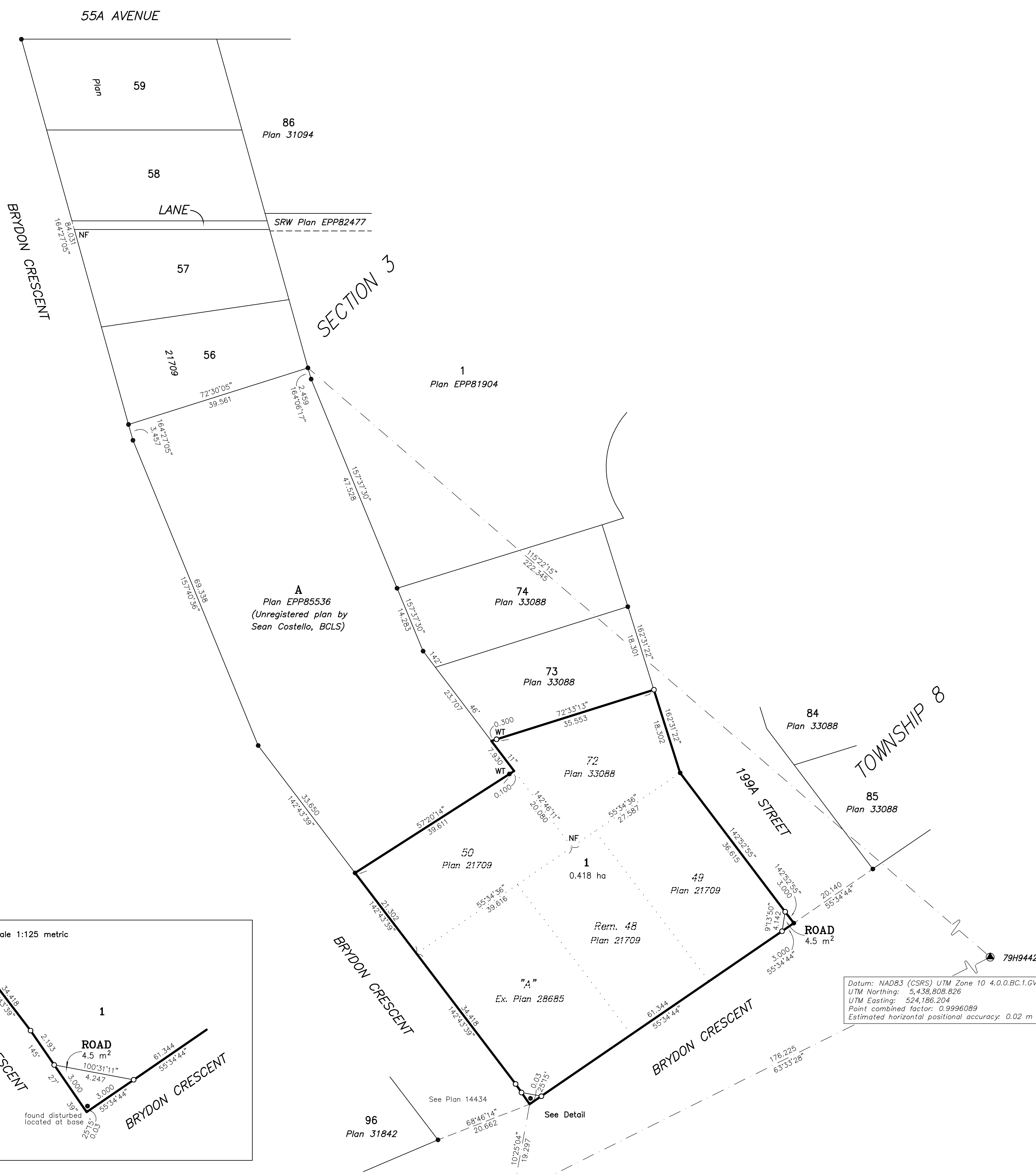
SCALE - 1 : 500
All distances are in metres

Integrated Survey Area No. 45
City of Langley, NAD83 (CSRS) 4.0.0.BC.1.GVRD

Grid Bearings are derived from observations between Control Monuments 79H9442 and 79H9488

The UTM co-ordinates and horizontal positional accuracy achieved have been derived from the Mascot published coordinates for geodetic control monuments 79H9442 and 79H9488.

This plan shows horizontal ground-level distances except where otherwise noted. To compute grid distances, multiply ground-level distances by the average combined factor of 0.9996086 which has been derived from geodetic control monument 79H9488.



Datum: NAD83 (CSRS) UTM Zone 10 4.0.0.BC.1.GVRD
UTM Northing: 5,438,808.826
UTM Easting: 524,186.204
Point combined factor: 0.9996089
Estimated horizontal positional accuracy: 0.02 m

Datum: NAD83 (CSRS) UTM Zone 10 4.0.0.BC.1.GVRD
UTM Northing: 5,438,730.385
UTM Easting: 524,028.477
Point combined factor: 0.9996086
Estimated horizontal positional accuracy: 0.02 m

- Legend:**
- Denotes control monument found
 - Denotes standard iron post found
 - Denotes standard iron post set
 - WT Denotes witness
 - NF Denotes nothing found
 - Ex. Denotes explanatory
 - Rem. Denotes remainder

Note: This plan shows one or more witness posts which are not set on the true corner(s). Witness posts are set along the production of a boundary unless otherwise noted. Some symbols and lines have been exaggerated for clarity.